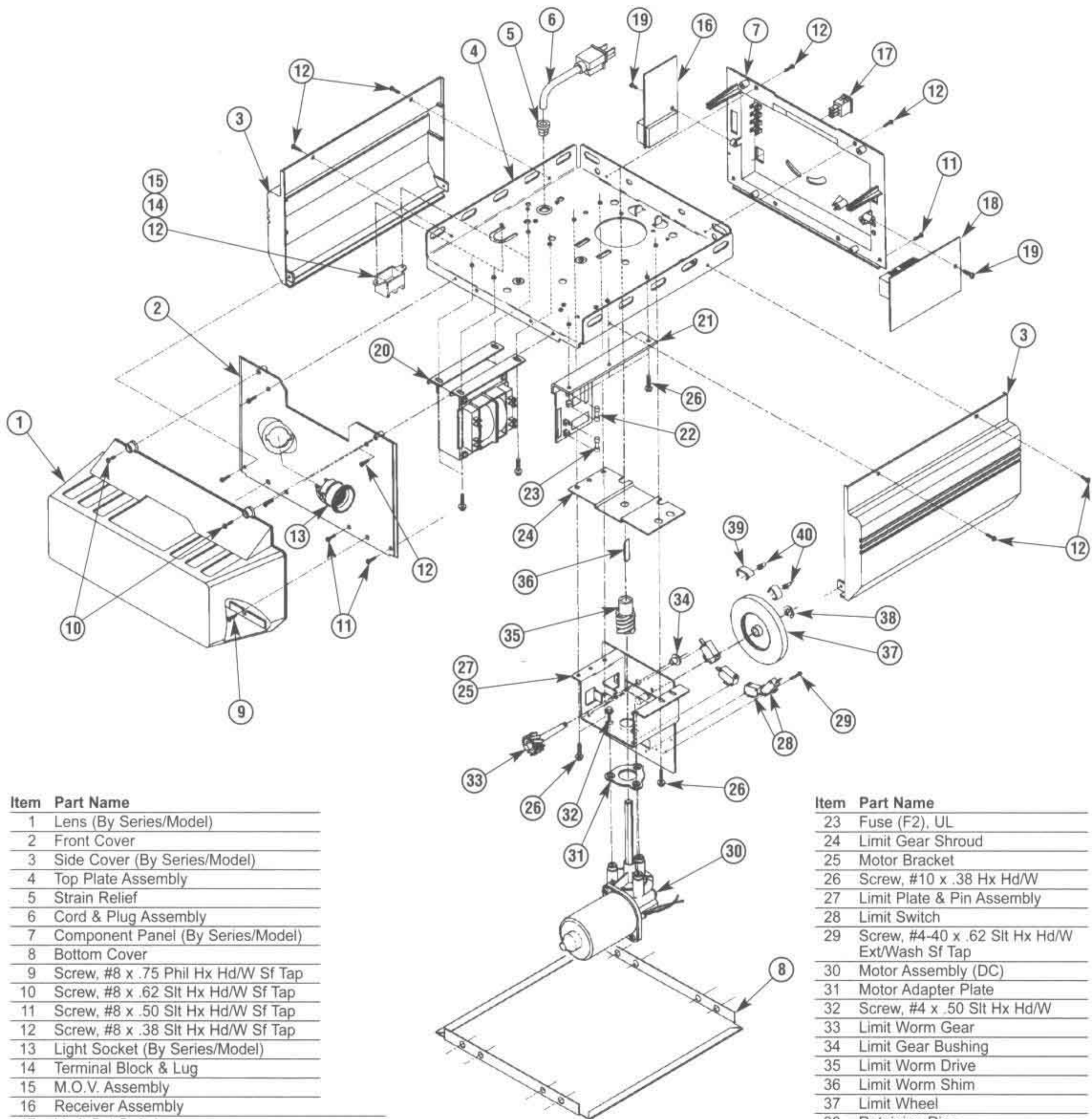


**Stealth Power Head**



Item	Part Name
1	Lens (By Series/Model)
2	Front Cover
3	Side Cover (By Series/Model)
4	Top Plate Assembly
5	Strain Relief
6	Cord & Plug Assembly
7	Component Panel (By Series/Model)
8	Bottom Cover
9	Screw, #8 x .75 Phil Hx Hd/W Sf Tap
10	Screw, #8 x .62 Slit Hx Hd/W Sf Tap
11	Screw, #8 x .50 Slit Hx Hd/W Sf Tap
12	Screw, #8 x .38 Slit Hx Hd/W Sf Tap
13	Light Socket (By Series/Model)
14	Terminal Block & Lug
15	M.O.V. Assembly
16	Receiver Assembly
17	Limit Set Switch
18	Sequencer Assembly
19	Screw, #6 x .38 Slit Hx Hd/W Sf Tap
20	Transformer Assembly (By Series/Model)
21	Rectifier Board Assembly
22	Fuse (F1), UL (By Series/Model)

Item	Part Name
23	Fuse (F2), UL
24	Limit Gear Shroud
25	Motor Bracket
26	Screw, #10 x .38 Hx Hd/W
27	Limit Plate & Pin Assembly
28	Limit Switch
29	Screw, #4-40 x .62 Slit Hx Hd/W Ext/Wash Sf Tap
30	Motor Assembly (DC)
31	Motor Adapter Plate
32	Screw, #4 x .50 Slit Hx Hd/W
33	Limit Worm Gear
34	Limit Gear Bushing
35	Limit Worm Drive
36	Limit Worm Shim
37	Limit Wheel
38	Retaining Ring
39	Limit Cam
40	Limit Pinion, 8 Tooth